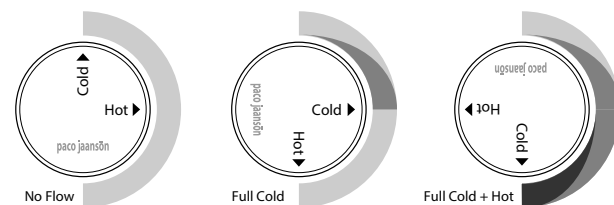
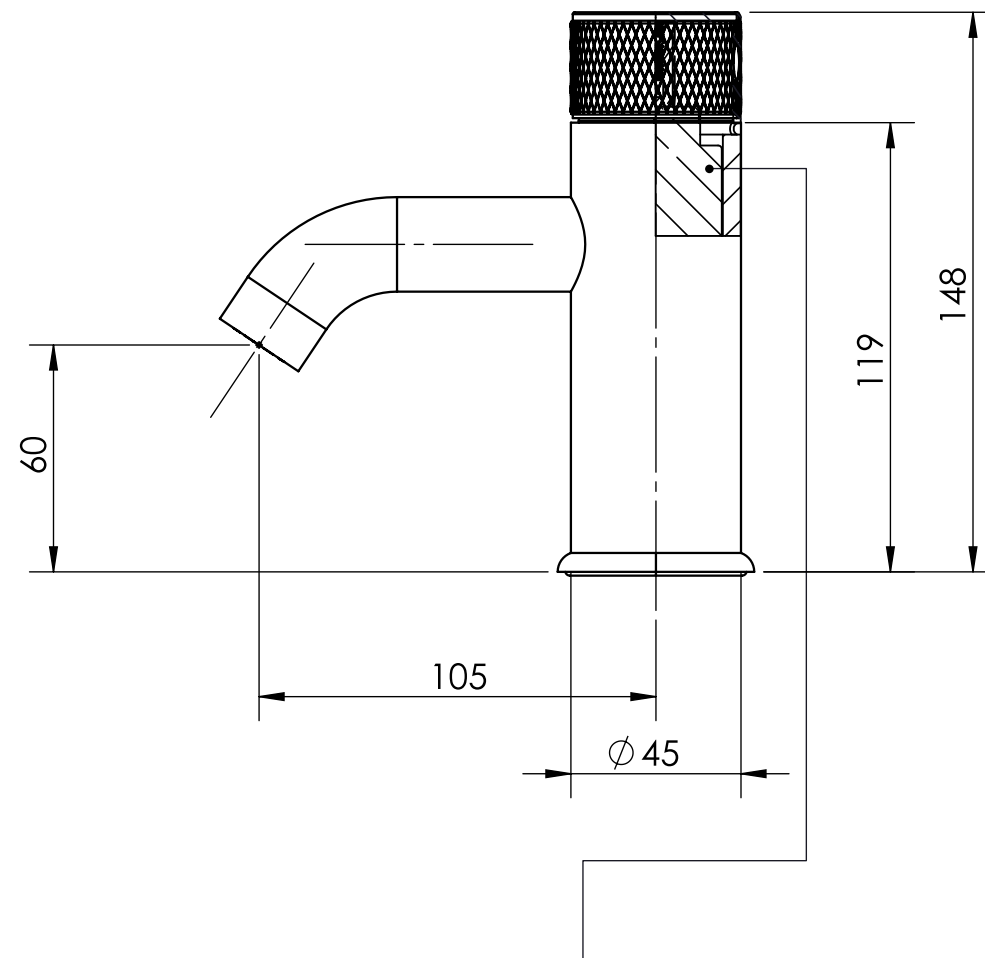


Benelli incorporates Progressive Cartridge technology - a new type of single handle mixer, excelling in efficient energy saving by reducing hot water wastage.

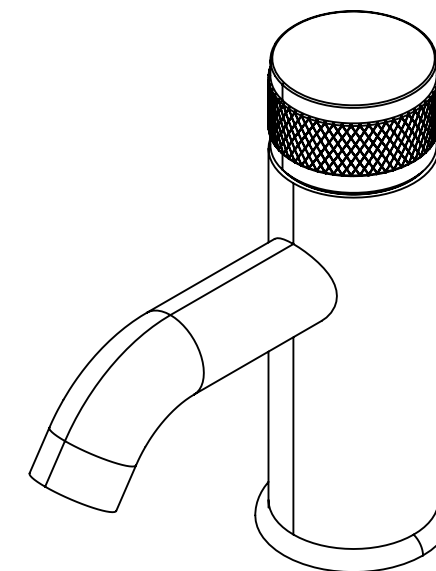
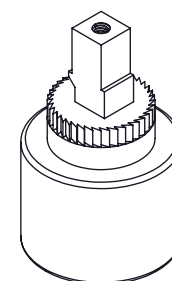
Modern flow controlled spout and showers operate best at full pressure. Turning the handle clockwise starts cold water flow increasing the rate at a quarter turn. Continuing to turn introduces warmer water until full hot water flow is reached at half turn.



This efficient cartridge technology, allows accurate temperature and flow control in one simple rotation of the low profile handle.



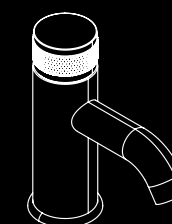
PROGRESSIVE MIXER CARTRIDGE
Wels 5 Star - 6.0 L/Min



PROGRESSIVE
CARTRIDGE

BENELLI

Mixer Code: BEN-38812



BENELLI GLOBAL
www.benelliglobal.com.au

Dimensions are approximate. Information provided with this drawing is representative of the actual product available at the time of production. Due to our policy of continuous product development, the designs and specifications depicted are subject to change without notice. Please confirm all particulars with your sales consultant prior to purchase. Each Benelli product is covered by a limited warranty. Full terms and conditions are available from your sales consultant or via our website.